



Primer

DDO-22 T2

OPTIMA stack dryers

T2 CONTROL

User friendly and totally programmable 7" T2.
USB Connection. Online platform free of charge for programming, telemetry, data analysis...thanks to the IoT.
Videos on display (ads, instructions, etc.).
37 languages.

OUTSTANDING FEATURES

Reversing drum action as standard.
Stainless steel drum as standard.
Frequency inverter as standard.

EFFICIENCY

DUAL AIRFLOW: mixed axial-radial airflow.
Big fluff filter.

CONNECTIVITY

IoT - PrimerLink.
Management of laundries: OPL and COIN.
Remote payment.

VERSATILITY

Make to order: customisation.
Wet Cleaning.
OPL > Multivending - Standard OPL model easily transformable to coin laundry uses.

ERGONOMICS

IoT - **PRIMERLINK** standar.
Management of laundries: OPL and COIN.
Remote payment (coin-laundry).

EASY MAINTENANCE

Hinged control panel: easy and ergonomic access.
Technical menu: statistics for technicians.

OTHERS

Grey skinplate outer casing, stainless steel look
EFFICIENT DRUM: new drum with stamped holes
COOL DOWN: anti-wrinkle at the end of the cycle.
Heating options: electric and gas, except model DDO-22 T2 gas only.
CE approved.



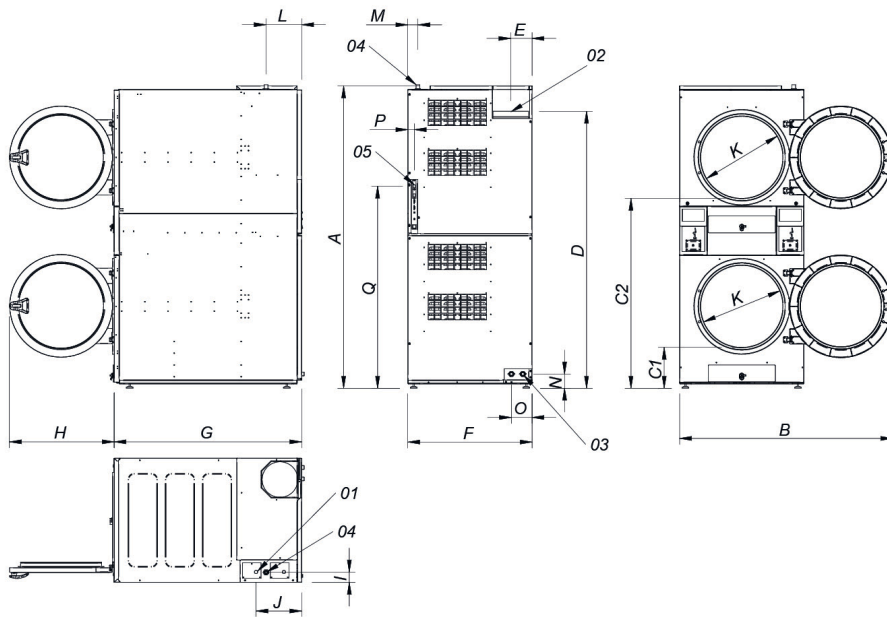
OPTIONS

- License IoT - PrimerLink
- SMART DRY for STACK (order 1 unit per column)
- Double doorglass (order 1 unit per column)
- NG gas option (Natural) for DDO
- Fire extinguisher STACK (order 1 unit per column)
- Tropicalized model (order 1 unit per column)
- Opposite door opening (order 1 unit per column)
- Dosing-spraying (order 1 unit per column)
- Back panel with air filter (STACK)
- 400V III 60Hz 11/14/18/22kg
- Fluff filter with grid 0,3 mm (standard in STACK is 0,6 mm)
- 440V/480V III 60Hz 11/14/18/22kg (maritime)
- Stainless steel front and side panels DDO-22
- Front panel in stainless steel DDO-22
- Maritime wooden packing DDO-22
- Several payment systems for self-service

CAPACITY & DRUM		UNIT.	DDO-22 T2	
Capacity 1/18		Kg	24,3	
		lb	53,6	
Capacity 1/20		Kg	21,9	
		lb	48,3	
Ø Drum		mm	835	
		inch	32,87	
Drum length		mm	800	
		inch	31,50	
Drum volume		l	440	
		cu ft	15,54	
Ø Door hole		mm	575	
		inch	22,64	
Door center height		mm	547 / 1.618	
		inch	22,60 / 63,70	
Height from floor to bottom of door		mm	286 / 1.330	
		inch	11,26 / 52,36	
ELECTRIC HEATING				
Evaporation capacity		L/h	-	
		US gallon/h	-	
Hourly output		Kg/h	-	
		lb/h	-	
Installed heating power		kW	-	
Installed electrical power		kW	-	
Drum motor power		kW	0,37 x2	
GAS HEATING				
Evaporation capacity (gas model)		L/h	44	
		US gallon/h	11,624	
Hourly output (gas model)		Kg/h	88	
		lb/h	194	
Installed gas heating power		kcal/h	26139 x2	
		Btu/h	103658,5 x2	
Installed gas heating power		kW	30,4 x2	
Installed electrical power		kW	1,94	
Instant propane gas consumption (G31)		Kg/h	2,61 x2	
		lb/h	5,75 x2	
Instant natural gas consumption (G20)		m ³ /h	3,22 x2	
		cfm	1,89 x2	
Ø Gas inlet		BSPP ISO 228-1	3/4"	
VENTILATION				
Fan motor power		kW	0,55 x2	
Nominal air flow rate		m ³ /h	900 x2	
		cfm	529,72 x2	
Ø Fume exhaust		mm	250 x2	
Ø Fume exhaust		inch	9,84 x2	
HEAT EMISSION				
Maximum total heat emission		kW	2,6	
		Btu/h	8876,8	
Max. front heat emission		kW	1,9	
		Btu/h	6486,9	
CONNECTIONS			E	G / S
Tension 230V - I + N + T		Nº x mm ² / A	-	3 x 2,5 / 20A
Tension 230V - III + T		Nº x mm ² / A	-	3 x 2,5 / 20A (1*)
Tension 400V - III + N + T		Nº x mm ² / A	-	3 x 2,5 / 20A (2*)
NET DIMENSIONS / D. WITH PACKING				
Net / gross width		mm	870 / 950	
		inch	34,25 / 37,40	



Net / gross depth	mm	1.312 / 1.395
	inch	51,65 / 54,92
Net height / gross height without heating	mm	2.118 / 2.250
	inch	83,39 / 88,58
Net / gross weight	Kg	373,5 / 388,5
	lb	823,43 / 856,50
OTHERS		
Sound level	dB	69



- 01. Electric connection
- 02. Fumes outlet ø250
- 03. 2 Sprinkler valves 3/4"
- 04. Gas inlet 3/4
- 05. Ethernet connection (only available control T2 models)

* Measurement with legs mounted (30mm)

	A	B	C1	C2	D	E	F	G	H	I	J	K	L	M	N	O	P	Q
DDO-22	2118*	1490	286	1330	1940	149	870	1312	735	73	320	575	250	70	100	145	45	1416

